

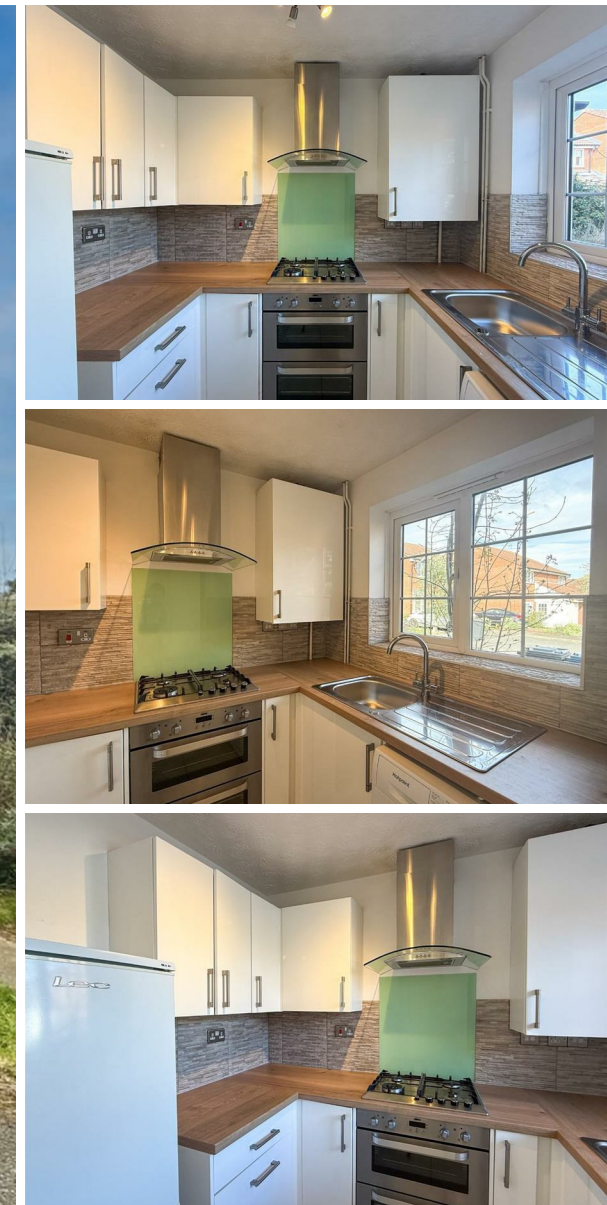


Redmayne Arnold & Harris
estate agents, letting agents & surveyors

rah.co.uk

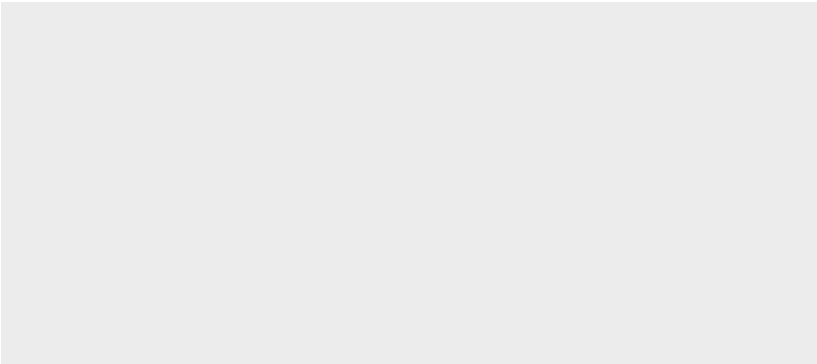


TO LET



24 Mandrill Close, Cambridge, CB1 9TN

£1,400 PCM



THE PROPERTY

A well-presented, unfurnished two-bedroom property located in a quiet residential area of Cherry Hinton, Cambridge.

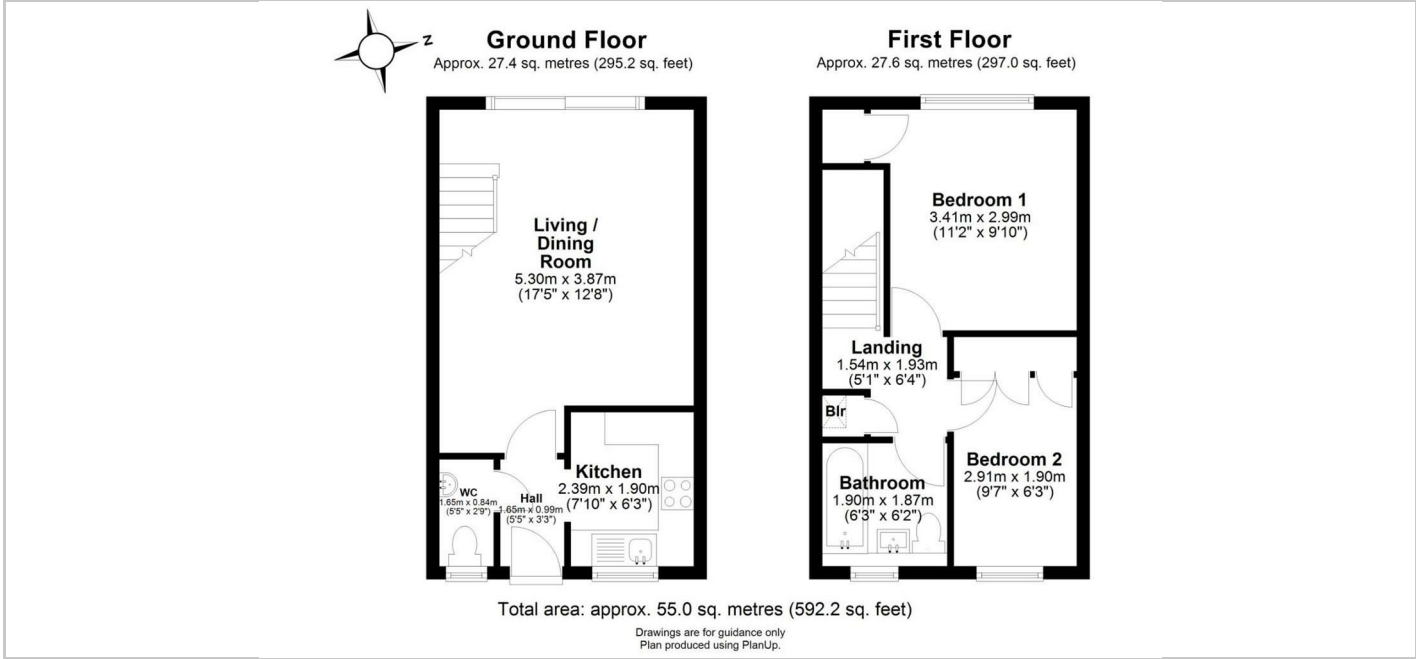
The property comprises a well-equipped kitchen complete with built-in oven, hob, fridge freezer, and washing machine, along with a bright reception room and a convenient downstairs WC. Upstairs, there are two spacious double bedrooms and a modern family bathroom featuring a bath with overhead shower, WC, and basin. To the rear, the property benefits from an enclosed garden, providing an excellent outdoor space, as well as allocated off-road parking.

The property enjoys a convenient location with excellent access to a range of local amenities including supermarkets, shops, and cafés, all within easy reach. It is also ideally positioned for quick connections to Cambridge City Centre and the A14, making it particularly suitable for commuters and professionals.

The property will be managed by the Landlord.

- EPC Rating: Current C
- Council Tax Band: C
- Deposit: £1,610
- Holding Deposit: £360
- Minimum 12 Month Tenancy

SITUATION



Directions

